

Three Little Maids



Approximate Design Area 15.5in x 13in (40cm x 33cm)
This Blackwork design contains a chart and instructions
and can be stitched on 14 count Aida or 28 count Evenweave



Published by Catkin Embroidery Designs
31 Cleeve Road, Knowle, Bristol BS4 2JR
Tel: (0117) 971 5802 Fax(0117) 914 7160

Cross Stitch in:

✕	Burnt Orange lt	Gold 7
■	Black	310
●	Garnet dk	814
▣	Garnet med	816
●	Green dk	986
D	Green	988
+	Pewter Grey vy dk	3799
⌘	Pewter Grey vy dk + Black	3799 + 310

DMC

Back Stitch in:

=====	Burnt Orange lt	Gold 7
=====	Black	310
=====	Steel Grey dk	414
=====	Garnet med	816
=====	Green	988
=====	Pewter Grey vy dk	3799
=====	Pewter Grey vy dk + Black	3799 + 310

The blending filament used is Gold 7 in the Madeira Glissengloss range

Additional Information

When sorting the DMC threads please note that the DMC colours used in the are as follows -

- 310 -- Black
- 3799----Dark Grey
- 814----Dark Red
- 816----Red
- 986----Dark Green
- 988----Green
- 414----Grey



Catkin Embroidery Designs Blackwork Instructions

General

In order to maintain an even tension it is advisable to use an embroidery frame or hoop. If you are leaving your work for some time, remember to release the fabric from the frame to prevent it being marked. In Blackwork it is essential to avoid carrying threads a long distance across the back of the fabric as it shows through the completed work.

Getting Started

Bind, tape or zig-zag raw edges of material to prevent fraying. Fold the material into four, horizontally and vertically and pinch centre to mark design-starting point. Sort and identify threads. Daylight is best for this. The six stranded thread can be separated into 1 or 2 strands as required. It is inadvisable to use lengths of more than 20 inches.

Start working your design from the middle so that it is centred on your material. Do not start with a knot. Blackwork consists of an outline usually in 2 strands, with an infill pattern that is usually in 1 strand. This is only a general rule and specific instructions for this design can be found in the design notes. It is a matter of personal preference whether the outline or the infill pattern is stitched first. For those who prefer to stitch the outline first it will be necessary to find the centre of the fabric and count squares (Aida) or threads (Evenweave) outwards to reach a starting point.

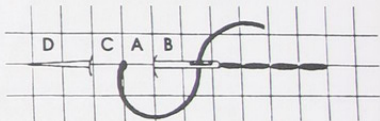
Please remember to weave loose threads into the back of the finished work to prevent them showing through the design when framed. Since Blackwork has so many areas of blank fabric incorporated into the design there is more danger of this happening than in any other embroidery techniques.

Stitches

Note that the stitches below are illustrated on 14 count Aida, where the squares can be easily seen on the fabric. In the case of 28 count Evenweave or Jobelan remember to stitch over 2 x 2 threads.

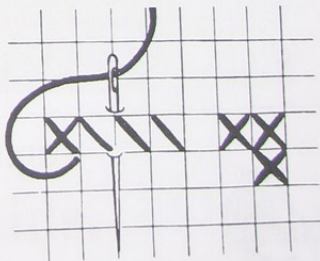
Back stitch

Represented by lines on the chart and can be stitched horizontally, vertically or diagonally. Bring needle up at **A**, down at **B**, up at **C**, down at **A** and up at **D**. Continue until outline is completed.



Cross stitch

The colour used is indicated by the symbol in the square which can be identified from the Chart Key. The direction these are worked in is not important PROVIDED all the top stitches are worked in the same direction i.e. left to right or right to left.



Three Little Maids Stitching Notes

Approximate Design Size 13" x 15.5" {33cms x 39cmc}

This design can be stitched on 14 count aida or 27/28 count evenweave over 2 x 2 threads and is stitched in Blackwork (worked in backstich or stab-stitch) and cross-stitch.

The 4 small arrows, one appearing at the edge of each of 6 pages of the chart, are to enable you to centre the design on your fabric. Please note that to make moving from 1 page of the chart to another easier there is a **2 line shaded overlap** on pages 2-6 where the adjoining 2 lines from the previous page are duplicated

General

In the Blackwork part of the design the thicker lines, usually outlines are stitched in 2 strands of the appropriate colour, the thinner lines e.g. the infill patterns are stitched in 1 strand. Where darker lines appear over the infill pattern these should be put in after the underlying infill pattern is completed.

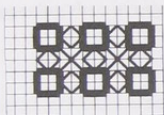
Cross-stitches are in 2 strands of the thread shown in the key. Where a half-stitch is used, for example in the eyes of the lady on the far right, a diagonal line is shown across the square with the appropriate symbol behind it.

Lady on Left

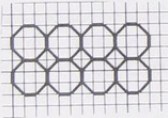
Outlined in 2 strands of DMC 310.

The infill pattern of **her gown** is in DMC 310 and 816

The thicker line squares are stitched in 2 strands of DMC 816 and the surrounding thinner infill in 1 strand of DMC 310.



Her underdress infill pattern is in 1 strand of DMC 414.



Fan

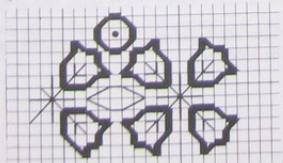
The diamond shapes on the fan are outlined in 1 strand of DMC 310

Lady In Middle

Outlined in 2 strands of DMC 310

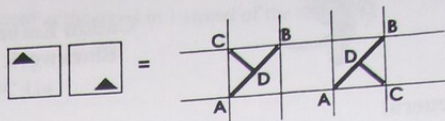
The infill pattern of her Dress is in DMC 814 and DMC 986

The thicker lines (The flowers) are in 1 strand of DMC 814 and the thinner lines (greenery) are in 1 strand of DMC 986



1/2 Cross-stitches

If the symbol is in the corner of the square with a diagonal line across the square, it indicates a half stitch. Bring the needle up at corner **A** and then diagonally down at the opposite corner **B**. Next bring the needle up at **C** and down at **D** in the centre of the square.



Beads

Where a design uses beads, these are attached by a diagonal stitch through the bead in a single strand of toning cotton, using a beading needle or crewel No. 8.

Special Aftercare Instructions

Natural oils from the skin may discolour the fabric after a time under glass. It is recommended that the work be gently hand washed in luke-warm water, using a mild detergent (non-biological and bleach free) rinsed well before excess water is squeezed out onto a towel. Whilst damp, iron face down on a thick towel. This prevents the stitching being flattened. Metallic threads and beads should have work covered with a cloth before being ironed face down.

We hope you enjoy working this design. A catalogue of other designs is available from the address below.



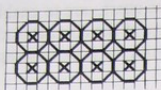
Satkin Designs

31 Cleeve Road,
Knowle,
BRISTOL BS4 2JR.

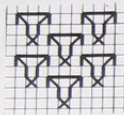
The Fan is outlined in 2 strands of DMC 310 and the motif at the top is in 1 strand of the same.

Sash or Obi

The infill pattern on her sash or obi is in 1 strand of DMC 414



The infill pattern of her **underdress** is in 1 strand of DMC 3799.



Lady on Right

The infill pattern of her **underdress** is in 1 strand of DMC 414.



Her **sash** in 1 strand of DMC 3799



The Sleeve Cuff

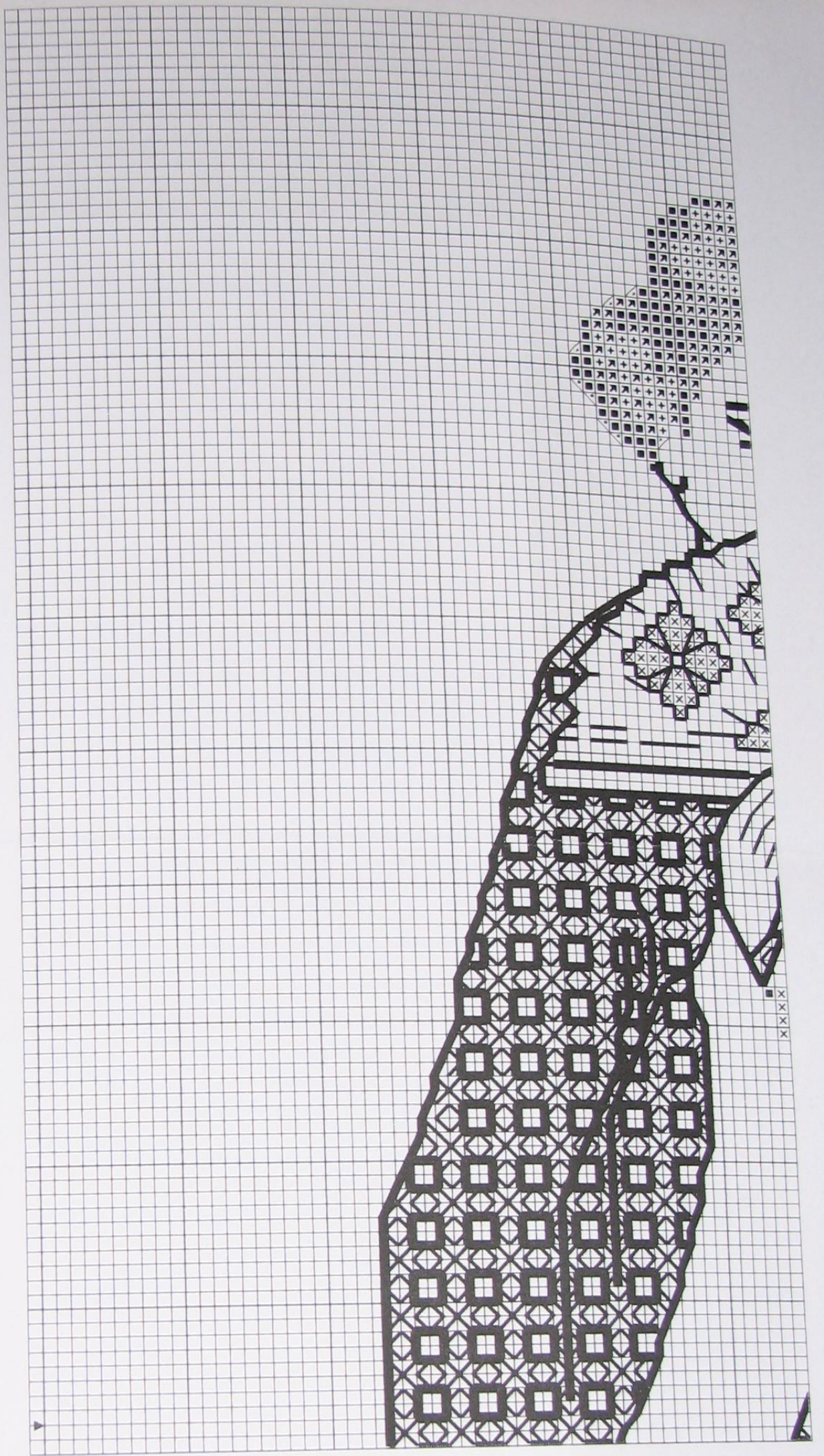
The red cross-stitch pattern should be outlined in 1 strand of DMC 310

Bamboo

The bamboo appearing behind the lady on the right is stitched in 1 strand of DMC 414.

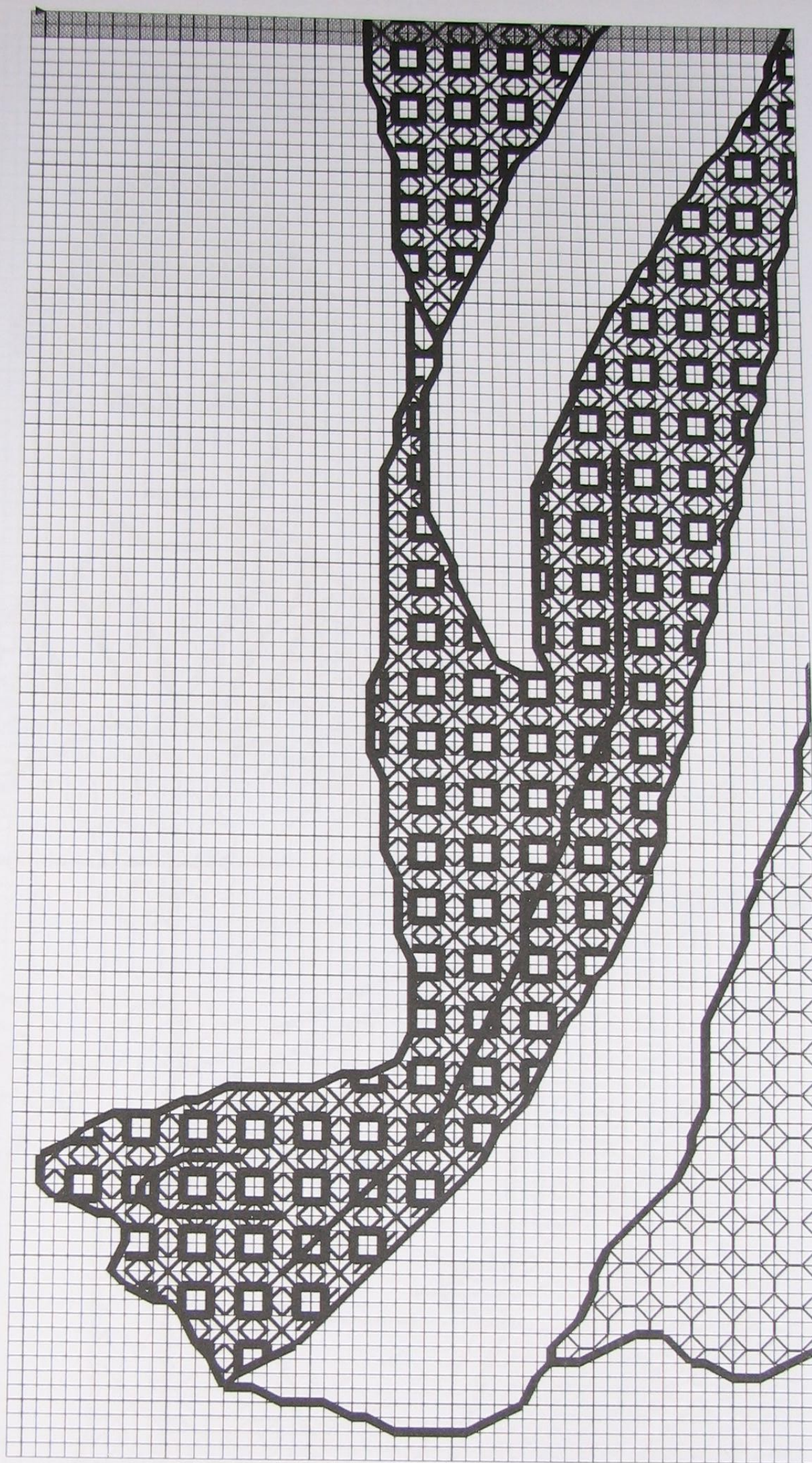
Copyright Notice

All printed matter in this pack is the copyright of Catkin Embroidery Designs 2003 and may not be copied by any means or stored in any retrieval system without the express written permission of the publisher.

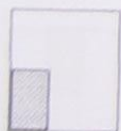


Catkin Embroidery Designs
Three Little Maids[©]





Catkin Embroidery Designs



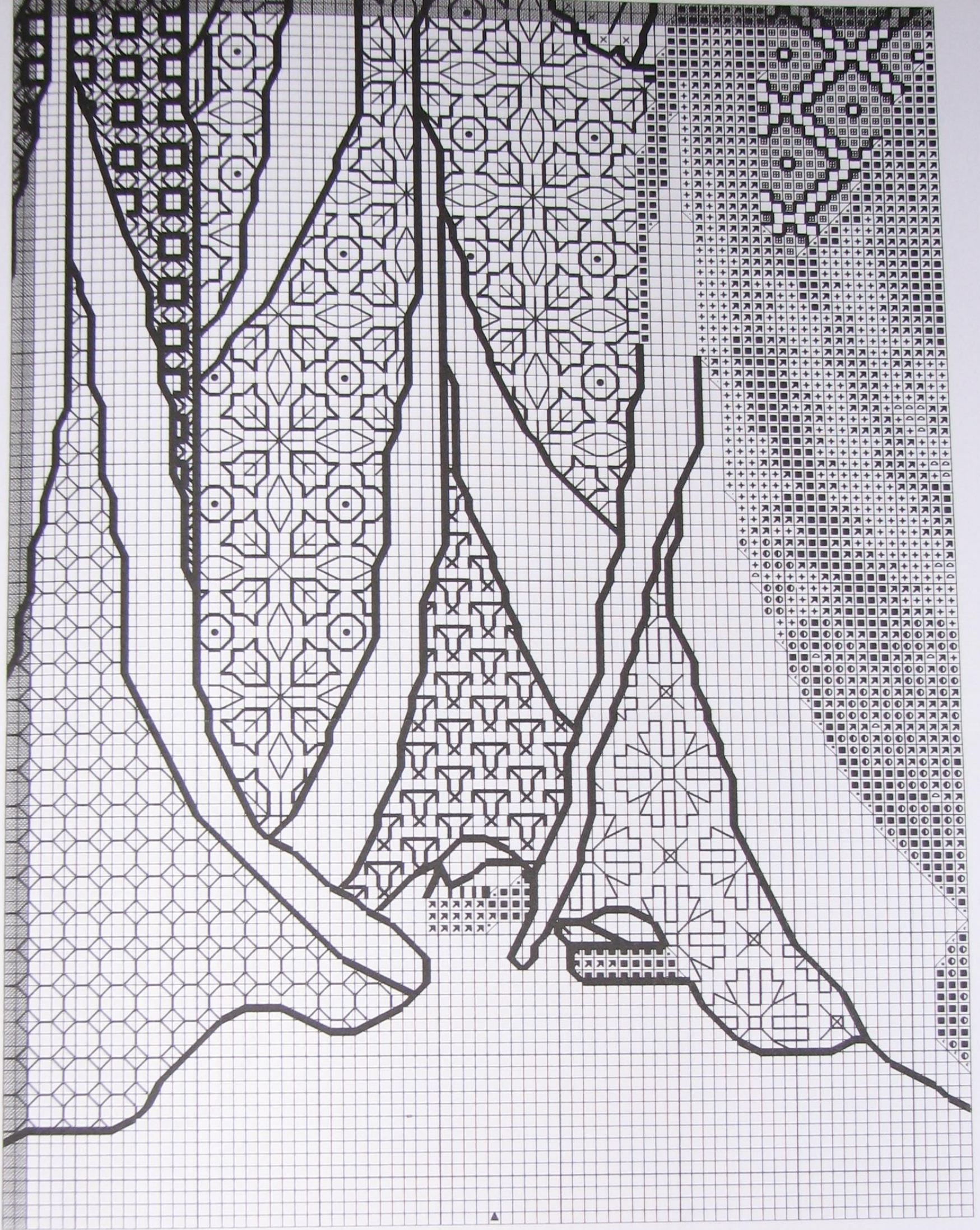
Three Little Maids®





Catkin Embroidery Designs
Three Little Maids®

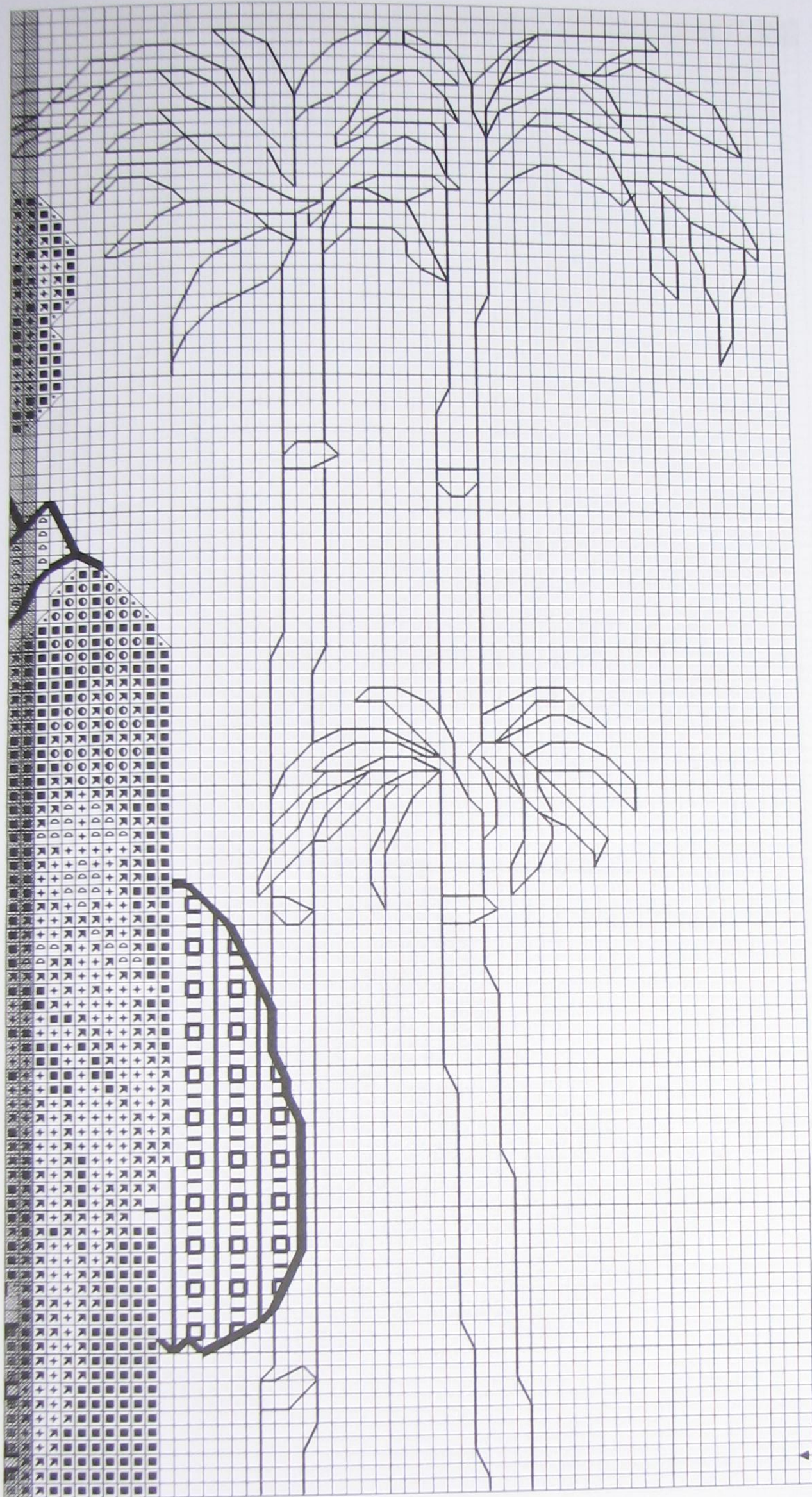




Catkin Embroidery Designs

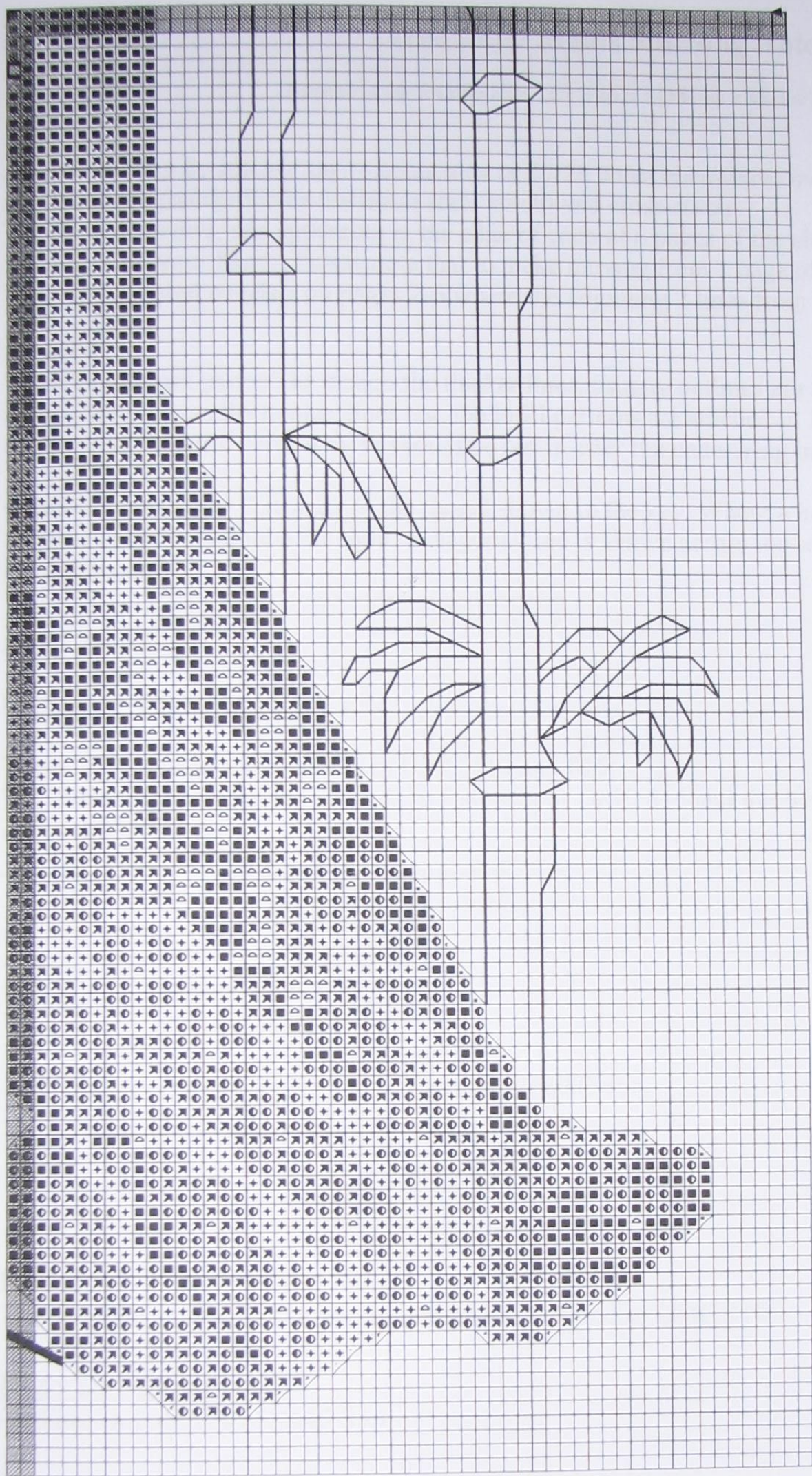
Three Little Maids[©]





Catkin Embroidery Designs
Three Little Maids.®





Catkin Embroidery Designs

Three Little Maids[®]

